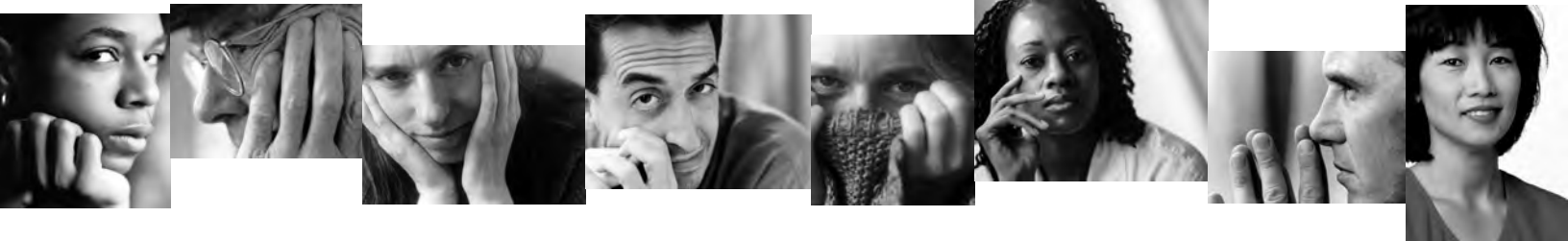


ANNUAL REPORT FISCAL YEAR 2007



Changing
LIFE stories

into **SUCCESS** stories

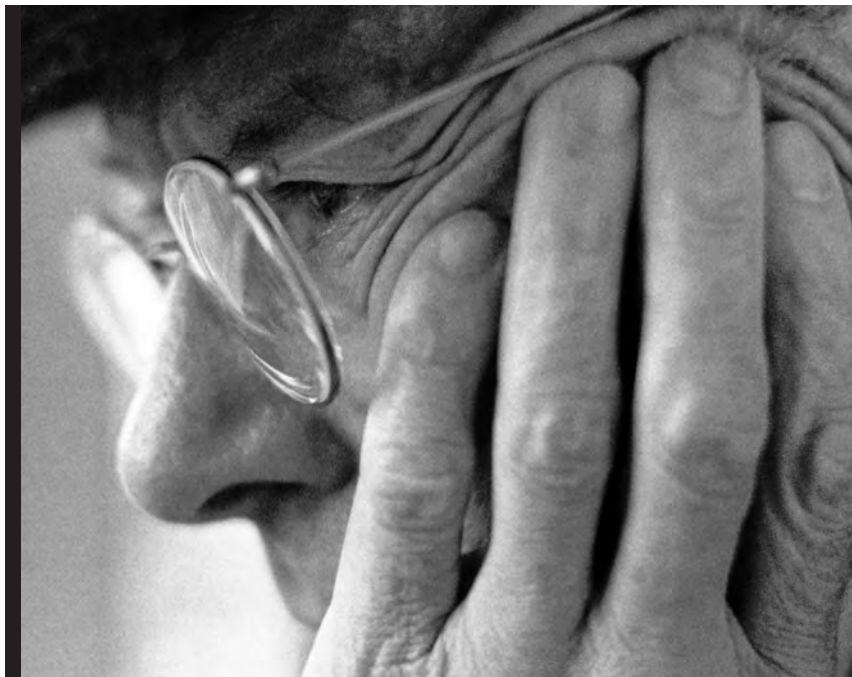


Greater Cincinnati
Behavioral Health Services
Our Work is Life Changing

1322 E. McMillan Street
Cincinnati, OH 45206
513.354.7000
www.gcbhs.com



Greater Cincinnati
Behavioral Health Services
Our Work is Life Changing



OUR WORK IS IN THE COMMUNITY

ON STREET CORNERS.
IN PEOPLE'S HOMES.
AT THE WORKPLACE.

We're wherever we need to be to reach one of the largest disenfranchised groups in the community – people with severe mental illness. Each day, we connect with thousands of people whose lives are turned inside out and who have no other support to help them cope with their illness.

Our clients find us or we find them, and the start of a new life begins. We help them face their illness, learn job skills, manage their finances, live with others, learn to care for themselves and cope with the demands of life. We replace confusion with confidence, sadness with smiles and hopelessness with hope. One step at a time, our clients become productive members of the community.

ONE COMPLETE AND COMPASSIONATE RESOURCE.

- ▲ The most comprehensive mental health agency serving adults with severe mental illness
- ▲ Linked with a wide range of other providers
- ▲ More than 300 staff and 12 locations
- ▲ “Best practices” programs and innovative services
- ▲ Fully certified and nationally accredited
- ▲ A multi-disciplinary team of highly-trained specialists and a caring staff

Skilled and caring professionals treat clients with compassion, patience and dignity as they provide individualized services. We address our clients' housing, psychiatric, medication, vocational, social, and support needs. We are their “one stop”.

For more information, please call 513.354.7000 or visit www.gcbhs.com

2007 HIGHLIGHTS

GCB ACCOMPLISHMENTS

- Received the coveted Ohio Department of Mental Health Award for excellence in clinical quality for our recovery efforts.
- Received two new grants from the Greater Cincinnati Health Foundation: one to expand services to transitional youth and the other to develop a social enterprise.
- Consolidated case management locations to a 30,000 sq. ft. site to house case management, psychiatric, nursing and pharmacy services.
- Improved psychiatric services by increasing productivity, reducing no-shows and improving the quality and access to care.
- Had “best year ever” financially including full incentive payments from the Mental Health Board.
- Opened a specialty, in-house, pharmacy service through a contract with QoL
- Opened an integrated primary and behavioral health-care clinic through a contract with The Healthcare Connection
- Signed an agreement with a Butler County mental health provider to offer financial and administrative services.
- Developed a new emergency “Code Yellow” response at all prime locations.
- Secured United Way funding for Vocational Services.
- Our two day programs, Crossings and the Mitchell Center, co-located to become the Welcome Center.
- Developed a “Clinic” at 1501 Madison Road with integrated care, a clinic coordinator and benefits specialist.
- Continued level of care (LOC) development and enhancements.
- First in Ohio for outcomes completion percentage for large organizations.
- Expanded the Wellness Management and Recovery initiative and made other clinical and team enhancements.

GRANTS

- Social Enterprise Business Development – the Greater Cincinnati Health Foundation
- Transitional Youth Program Expansion – the Greater Cincinnati Health Foundation
- Robert M. Butler Foundation to the homeless outreach fund
- Thomas J. Emery Memorial Fund to restore the Kemper House kitchen.

AWARDS AND RECOGNITION

Ohio Department of Mental Health Clinical Quality Award for 2007

A MESSAGE

FROM THE CHIEF EXECUTIVE
OFFICER AND THE BOARD
CHAIRMAN



Anthony C. Dattilo
Chief Executive Officer



William Baechtold
Chairman

Fiscal Year 2007 was a uniquely successful year for GCB. The organization received two national awards recognizing the exemplary work of its Assertive Community Treatment Teams in addressing the needs of homeless persons with mental illness, and people with mental illness involved with the justice system. These prestigious “Community Re-integration” awards were given by Eli Lilly Co. GCB was also awarded the State of Ohio’s Clinical Quality Excellence Award in recognition of GCB’s employment efforts, use of best practices, Recovery Center, and level of care design and other outstanding programs. In the Spring of 2007, the agency culminated months of planning by opening a new, attractive and spacious site for psychiatric, case management, nursing and pharmacy services at 1501 Madison Rd.

During 2007, GCB embarked on two successful partnerships to improve service and continuity for our clients. Clients can now get their psychotropic medication during the same visit with their GCB doctor at the newly opened on-site pharmacy, provided by QoL Meds, a private firm. Clients can also be seen for primary healthcare through our wellness clinic opened through a contract with The Healthcare Connection, a federally funded, primary care health clinic.

From a financial and contractual basis, GCB drew down all appropriated funds and experienced the most successful year financially in the organization’s 30+ year history.

We sincerely thank our funders and donors who continue to help make GCB an outstanding organization.



Greater Cincinnati
Behavioral Health Services
Our Work is Life Changing

OUR RECOVERY MODEL



The President's New Freedom Commission on Mental Health (2003) calls for a major transformation in the mental health delivery system.

- ▲ Treatment must focus on building resilience and facilitating recovery.
- ▲ Services must enable clients to live, work, learn, and participate fully in their community.
- ▲ Clients must have choices about service options and providers.
- ▲ Stigma and shame must be eliminated.

At GCB, we believe

- ▲ clients can and will recover;
- ▲ services at GCB are based on instilling hope that recovery is possible;
- ▲ we empower our clients to choose and to take responsibility for their own recovery;
- ▲ we want our clients to fully participate in community life outside the mental health system, in their home, and on the job.

WE BELIEVE IN PEER SUPPORT WHERE CLIENTS ENCOURAGE, TEACH, LEARN, AND CHALLENGE EACH OTHER.

Our work is life changing.

Mental illness affects 1 in every 5 adults in our community. These people are from all backgrounds and walks of life. Family, friends, neighbors — no one is immune. What most of us take for granted, these people cannot. They struggle to concentrate, reason and make a decision. They can find it difficult to get and keep a job, to live alone or complete life's many tasks. They can feel an overwhelming sense of hopelessness.

Some have friends and family for support. Thousands of others have no one. They fall through the cracks of society, ending up homeless, incarcerated, in nursing homes or wandering aimlessly through life. They are without purpose, without hope, without anywhere to turn except here, where we change life stories to success stories.

SUCCESS STORY

Joe

As Joe describes his journey from Memphis to Cincinnati and other cities in between, you quickly realize that he has had many life experiences — some good — some bad that have shaped the man he is today.

Joe first realized he had a mental illness at age 13. Initially he was treated for depression, but after the loss of his mother in 1990, he knew he was suffering from a thought disorder and needed more help to manage his life. Joe sought assistance from a local mental health agency for case management and psychiatric services. Joe felt his quality of life would

improve with a job and he was referred to Greater Cincinnati Behavioral Health Services, the largest provider of vocational services to persons with severe mental illness in Hamilton County. Joe found a part-time job at a family owned car care center with the assistance of GCB's vocational staff.



GCB's vocational services provided Joe with assistance to find a job at the cafeteria in the US Federal Building. Joe has been working successfully, for the past five months at his new job and says the job "suits him". He likes the family atmosphere of his employer and he likes his boss, Mel, who is blind. Joe will be the first to say that he appreciates having a job coach to talk to on a regular basis to discuss any issues he was with work. "We just didn't have anything like this in Tennessee."

The next chapter in Joe's life includes saving for a car and traveling. Joe looks forward to the day he can drive to wherever he wants. He is happy to be where he is right now and feels glad he had the faith in himself to give this job a try.

CLIENT PROFILE

4,117 served in FY2007.

AGE

The average age of GCB clients is 43.

POVERTY

GCB clients have an average income of \$7,176. 80% have an annual income less than \$10,000.

WHERE THEY LIVE

78% of clients live on their own or with family or friends. About 150 are homeless at any time.

EMPLOYMENT

16% are employed.

EDUCATION

62% of GCB clients have finished high school.

GENDER

GCB clients are roughly half female and half male.

DIAGNOSIS

42% have psychotic disorders, 41% have mood disorders, the rest have a variety of disorders including anxiety and personality disorders.

ENHANCING OVER 3,500 LIVES DAILY

RESULTS OF SERVICE

Over 94% of clients surveyed indicate they are satisfied with GCB services.

Over 91% of GCB clients indicate they are receiving services because they want to be in treatment, compared to 84% for the state of Ohio overall.

Over 78% of case managed clients live independently in the community or with family.

Over 16% (over 450 clients) achieved competitive employment, compared to 10% of people with severe mental illness nationwide.

Over 60% of our clients report an improvement in psychiatric symptoms.

Less than 11% of GCB clients returned to a psychiatric hospital in 2007.

OUR PEOPLE-BUILDING PROGRAMS

- Case Management
- Psychiatric Services
- Nursing Services
- Range of Supportive Housing Options
- Residential Programs
- Assertive Community Treatment
- Transitional Youth Services
- PATH/Homeless Outreach
- Forensic Project
- Range of Vocational Programs
- Deaf/Mental Health Treatment Team
- Day Programs
- Substance Abuse/Mental Illness (SAMI) Programs
- Mental Health Court Project
- Social & Recreational Programs
- Money Management (Payee) Services

PROGRAM OVERVIEW

WE OFFER A DIVERSE GROUP OF PROGRAMS AT 13 LOCATIONS AS WELL AS AT CLIENT'S HOMES AND PLACES OF EMPLOYMENT.



CASE MANAGEMENT

Case Management refers to coordinating the overall care of our clients. Case managers may assist with Social Security benefits, medical benefits, housing and crisis management. They may refer clients to job training and placement, day programs, client support groups, family support and education groups and specialized services. Our case managers collaborate with family members, psychiatrists, medical professionals and other service providers to ensure optimal care for clients.

PSYCHIATRIC SERVICES

In addition to diagnosing, assessing and treating clients, GCB's psychiatric services include psychotropic medication management.

NURSING SERVICES

Physical health care and medication monitoring are a service we provide our clients, thanks to our network of skilled, caring and licensed nurses.

RANGE OF SUPPORTIVE HOUSING OPTIONS

Our clients learn and maintain independent living skills with the support of regular visits from staff.

ASSERTIVE COMMUNITY TREATMENT (ACT)

A portion of clients with severe mental illness requires intensive "wrap-around" services to remain in the community and work toward recovery. For these clients, GCB has created ACT teams, experts who work together to help clients achieve, maintain and increase their independence.

TRANSITIONAL YOUTH SERVICES

The Transitional Youth Program works in collaboration with local agencies to identify "at risk" youth as they move out of the juvenile mental health system. Using a team approach, GCB staff work with these youths to identify housing, educational and vocational needs and help ensure a smooth transition into adult life.

PATH/HOMELESS OUTREACH

In response to the increased number of mentally ill and homeless people in our community, GCB created a Homeless ACT team. This team works proactively with area shelters, service providers, and criminal justice system to link homeless and mentally ill persons with services. Once clients are engaged with the Homeless ACT team and stabilized in treatment, they are referred to regular case management. Our services for homeless persons with mental illness continue to grow, giving these clients treatment, support, hope and direction.

FORENSIC PROJECT

Forensic Assertive Community Treatment (FACT) utilizes intensive community support to provide mental health services and treatment to individuals who are mentally ill and are being released from prison on parole or post release control. The state prison system collaborates with the mental health system to link former prisoners with appropriate services. Services can include day treatment, vocational support and employment, medication training and education, housing, budgeting, assistance with daily living skills, and Medicaid, SSI and SSDI benefits.

VOCATIONAL PROGRAMS

Helping persons with disabilities gain and maintain employment is a major goal of GCB. Vocational services include job training, job placement and supervised employment programs.

DEAF/MENTAL HEALTH TREATMENT TEAM

We provide culturally sensitive services for mentally ill adults who are deaf, helping them live independently. These services may include advocacy, case management, therapy, job placement, doctor visits, computer training, shopping and family visits.

DAY ACTIVITIES AT CROSSINGS AND MITCHELL CENTER

A key challenge for persons with severe mental illness is isolation and lack of meaningful activity. In response, GCB operates programs providing psycho-educational groups, one-on-one coaching and peer support in an accessible, supportive setting. Day programs are highly beneficial in helping clients develop skills for functioning in the community.

SUBSTANCE ABUSE/MENTAL ILLNESS (SAMI PROGRAMS)

This program takes a highly specialized approach to helping adults with both severe mental illness and substance abuse problems.

MENTAL HEALTH COURT AND CRIMINAL JUSTICE PROJECT

This team includes a diversion program that enables qualified individuals to be treated in a court-monitored, community based mental health program in lieu of incarceration. Qualified clients have been diagnosed with a severe mental health condition and are charged with a non-violent misdemeanor with no previous history of violent offenses. The program offers ACT case management, housing and day support.

SOCIAL AND RECREATIONAL PROGRAMS

The interpersonal and social skills development provided by these programs help clients connect with others and live their lives in less isolation.

GROUP HOME

For clients coming out of the state hospital or other institutional environments, GCB provides a safe haven at Kemper House. At this location, clients begin to reconnect with the community as they work toward independent housing. GCB provides 24-hour, supervised living arrangements for 15 persons.

MONEY MANAGEMENT (PAYEE) SERVICES

Assistance with managing daily finances is one of the many services GCB provides to help clients live independently and successfully in the community.

WORKSHOPS & PRESENTATIONS

GCB staff and clients presented workshops and presentations to conferences and groups throughout the region, including

- the Greater Cincinnati Health Foundation and the Continuum of Care;
- NAMI Hamilton County;
- the Ohio Chapter United States Psychiatric Rehabilitation Association (USPRA) Conference;
- City of Cincinnati building inspectors;
- Mental Health Response Team Law Enforcement Trainings for Hamilton, Butler and Warren Counties;
- the Southwestern Ohio Rehabilitation Association;
- Summit Behavioral Health Grand Rounds meeting;
- the All-Ohio Community Psychiatry Conference;
- the Center for Families and Children in Cleveland;
- The CME Institute;
- Miami University School of Interdisciplinary Studies;
- Xavier University;
- the ACT Center of Indiana;
- the Ohio Program Evaluators' Group;
- Ohio Department of Mental Health Quality Council Meeting;
- Channel 12 "Cincinnati Matters" show; and the NAMI-Ohio Conference.

SUCCESS STORY

Damien

"I Have My Dreams Again"

Damien's easy smile and friendly presence make it unlikely that most people would ever guess his history. After serving time in jail, and then being homeless for a number of months, Damien contacted The Bureau of Vocational Rehabilitation (BVR) to try to get work. It was the BVR worker who referred Damien to GCB's job coaching program, and

from there Damien was also able to access GCB case management and Homelink, our housing assistance program. Within 3 months of coming to GCB, Damien has his own apartment and is working in GCB's supervised employment program.

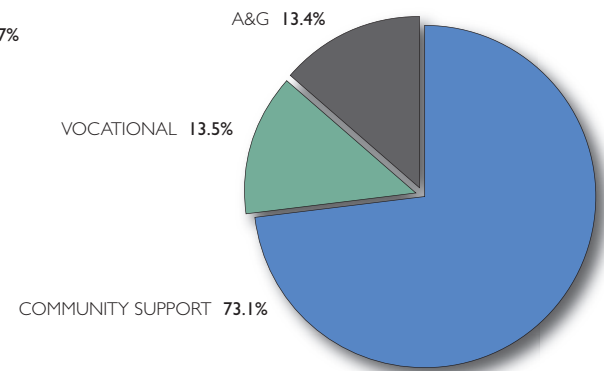
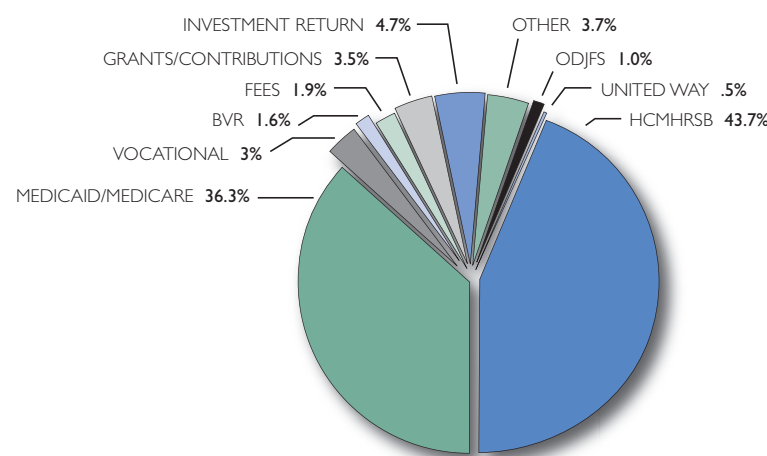
"I have my dreams again," says Damien. "It used to be I couldn't even get up in the morning. Now getting up and out of bed is no problem." Damien says he has been through "lots of programs," but "the people at GCB are all so humble and so full of compassion – it seems like everyone here really wants to help."



FINANCIAL HIGHLIGHTS 2007

REVENUE	
Hamilton County Community Mental Health Board and Recovery Services Board (HCMHR SB)	\$8,178,756
Medicaid/Medicare	\$6,793,906
Vocational Contracts	\$563,211
Ohio Bureau of Vocational Rehabilitation (BVR)	\$293,734
Fee for Service	\$360,613
Grants and Contributions	\$656,523
Other Sources	\$700,527
Investment Return	\$882,811
Ohio Department of Job and Family Services (ODJFS)	\$178,073
United Way	\$90,000
TOTAL REVENUE	\$18,698,154

EXPENSES BY PROGRAM	
Community Support (includes psychiatric, case management, housing and residential, and other community mental health services)	\$12,969,583
Vocational (includes Supported Employment Program)	\$2,390,954
Administration and General (A&G) (includes central management personnel, quality assurance and improvement, compliance, finance, human resources, information systems, and development expenses)	\$2,378,296
TOTAL EXPENSES	\$17,738,833



REVENUES

EXPENSES BY PROGRAM

An annual financial report is filed with the Attorney General's Office of the State of Ohio and the United States Internal Revenue Service. The accounts of Greater Cincinnati Behavioral Health Services are audited by an independent firm of Certified Public Accountants. Complete audited financial statements are available upon request.

OUR THANKS TO THE COMMUNITY

We'd like to thank those people and organizations who contributed to the Annual Campaign, ending on June 30, 2007, the General Fund and other special projects.

- | | | | |
|--|---|---|--|
| <p>\$10,000+</p> <p>Lindner Foundation</p> | <p>PATRONS \$250-499</p> <p>Lawrence Chiricosta
Jane Cohen
James J. and Rhonda L. Finkbeiner
Joe and Kathy Ganim
Don R. Gardner
Logan and Susan Jones
Julie Tarvin
Wells Fargo Insurance</p> | <p>Ronald L. and Joyce E. Hemingway
Lynn Herman
Warren and Laurel Herminghaus
Frank and Stephanie Herrmann
Gregory and Elizabeth Hoekzema
Elizabeth S. Huey
Cornelia Itean
Marcia Kaplan
Jay M. Karpen
Ellen Kelso
Lionel and Nancy King
Mary Kirsch
Peggy Kistner
Kevin Kloentrup
Charles and Mary Kuntz
Virginia Lambert
Barbara F. Lane
Tracy Lanham
Kyle Linnemann
Christopher Livermore and Diane Wright
Mark and JoAnn Lozier
Connie Lucas
Lucrum, Inc.
Sally Lund
Tom and Alice Maher
Joseph Manzo
Donald L. Matlack
Howard and Suzie McIlvain
Diana McIntosh
Ivan and Patty Mizrach
Kellie Monahan
Michael J. Mooney and Barbara J. Cook
Marjorie Motch
Patricia Mott
Sharon Mullins
Michael Oberdoerster
Open Door Ministries
John L. and Phyllis B. Overmann
John J. Pal
Michael Paris
Kenneth L. Parker
Robert and Ann Parker
Z. David and Diantha Patterson
Roger and Lynn Peterson
Ronald Pflighaar
Ken and Liz Popham
Katie Profit
James and Vicki Ragsdale
Ranjit Rath
Robert T. and Virginia S. Reese</p> | <p>Sara Reynolds
Linda Richey
George Rieveschl
Joanne Riley
Karl Payne and Susan Rivers-Payne
Mary Rostock
Thomas and Maria Schuch
Neal Schulte
Linda Seiter
Steven and Julie Shifman
Mary A. Smith
Nancy Stephenson
Bobbie Sterne
George G. and Linda O. Strietmann
Randy Strunk
Beverly Susman
J. Mack Swigert
James Tarbell
Paul Thierry
James Thomas and Cheryl Beach
William and Nancy Thomas
Neil Tilow
Charles H. and Mary K. Tobias
Pat Tribbe
David Turner
John and Rosemary Van Kirk
Carl F. Vilter
Gloria Walker
Grace Ward
Barry and Barbara Webb
David Welling
Patricia Welling
Jan Welsh
Linda Woeber
Patricia A. Woellert
Patricia Zeiser</p> |
| <p>CHAMPIONS \$5,000+</p> <p>The Thomas J. Emery Memorial Reading Investment
Wagner Trust</p> | <p>LEADERSHIP \$1,000-\$4,999</p> <p>Barnes Dennig & Company
Butler Foundation
Comfort Solutions
Fifth Third Bank
Forest Laboratories
Terrence D. Jane Garrigan
Nick and Barb Hahn
Roy Hardison and Don Baker
Lee Hollister
Franklin A. and Karen W. Klaine
The Kroger Co.
PL Marketing
Warren D. and Sarah A. Richards
Thomas D. and Mary Beth Sundermann
Taft, Stettinius and Hollister LLP
TSG-Empire Foods
USI Midwest
Richard E. and Barbara Wagner</p> | <p>FRIENDS UP TO \$249</p> <p>Donna L. and Arthur Abbatiello
William M. Backus
Donald and Carole Beere
Janice Bending
Melvin J. Bending
Harry and Charlotte Bishop
Daniel and Gayle Boller
James and Kimberly Bower
Brady Bowles
Dennis and Judith Braje
Jack E. Brown
Matthew Brownfield
Richard L. Buck
Pamela Butcher
George M. and Linda S. Callard
Jan Campbell
Edward O. Carrier
Anthony Carter
Patricia Cogan
John and Patricia Couzins
Dave Craft
Ronald H. Dattilo
Thomas and Debra Dattilo
Sue Dillon-Catron
Marifran Dirkes
Elaine Doyle
Benjamin and Julie Dusing
Janice M. Dyehouse
Phil and Donna Dyrda
Margaret L. Egbers
Steve Eppinghoff
Mark Everingham
Bruce Fairbanks and Jan Welsh
Amy Flesher
Marilyn Gambill
Walter Geier
Gary Gilmore
Thomas J. and Nancy K. Gruber
Gregory R. Hahn
Mary Hamilton
Meryl Hammond
Scott and Cathy Heiser
Brenda Heitkamp</p> | <p>IN-KIND GIFTS</p> <p>Clark, Schaefer, Hackett & Co.
Frisch's
Honey
John Keene
LPK
MDM Graphics
Robin Wood Flowers</p> |

GCB INFORMATION



OUR MISSION

To assist persons with mental illness and related barriers to lead productive and fulfilling lives.

OUR VISION

To be a leader and share our expertise through cost-effective, outcome-driven mental health and human services.

To expand the scope and geographic reach of our services through mutually beneficial relationships.

To continually seek and incorporate leading edge practices and treatments in assisting clients with their recovery.

OUR VALUES

We treat all clients with dignity and respect.

We value the uniqueness of every individual.

We instill dignity, responsibility and self-respect in all clients.

We understand and meet the needs of clients and their families.

We take pride in what we do.

We believe that our staff and their families are the source of our success.

We support and help our community and neighbors.

We respect and embrace the diverse cultural backgrounds, values and perspectives of our staff, clients and people with whom we come in contact.

We value collaborative relationships in delivering quality services.

We provide comprehensive, innovative and flexible services.

We provide outcome-oriented and cost-effective services.

We strive for quality and excellence in everything we do.

GREATER CINCINNATI BEHAVIORAL HEALTH SERVICES BOARD OF DIRECTORS

William J. Baechtold, Chairman
 Donna Abbatiello
 Richard G. Brown
 Mark Boudreaux
 Tony Carter
 Sue Dillon-Catron
 Angela Dodd
 Nick Hahn
 Kevin Kloentrup
 Kenneth Myles
 Karen O'Callaghan
 Kenneth L. Parker
 Thomas D. Sundermann
 Patricia Sweeney
 Julie Tarvin
 Richard Wagner
 Gloria Walker
 Victor A. Walton
 David S. Warren

LEADERSHIP TEAM

Tony Dattilo, Chief Executive Officer
 Tracey Skale, MD, Chief Medical Officer
 Jeff Kirschner, Chief, Program Operations
 Joe Johnston, Chief, Business Operations
 Debbie Dutton-Lambert,
 Chief Vocational Officer
 Regina Sheehan, Director of Development

GCB CONTACT INFORMATION

513-354-7000 Phone
 513-354-7115 Fax
www.gcbhs.com

ACCREDITATION

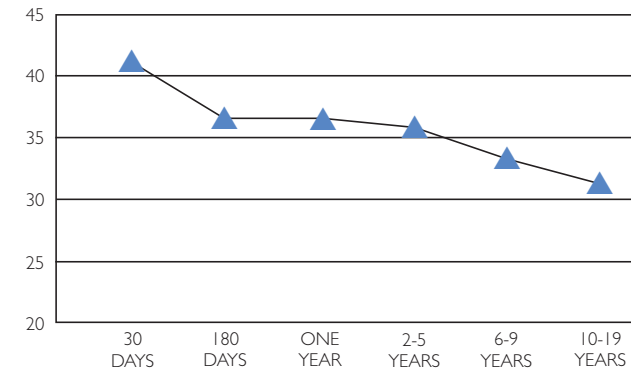
National Accreditation through CARE. Licensed and Certified by Ohio Department of Mental Health. Funded by Hamilton County Community Mental Health Board, Ohio Rehabilitation Services Commission, Hamilton County Department of Job and Family Services, City of Cincinnati, United Way, Ohio Department of Rehabilitation & Correction, and Hamilton County Board of Mental Retardation & Developmental Disabilities.

GREATER CINCINNATI BEHAVIORAL HEALTH SERVICES

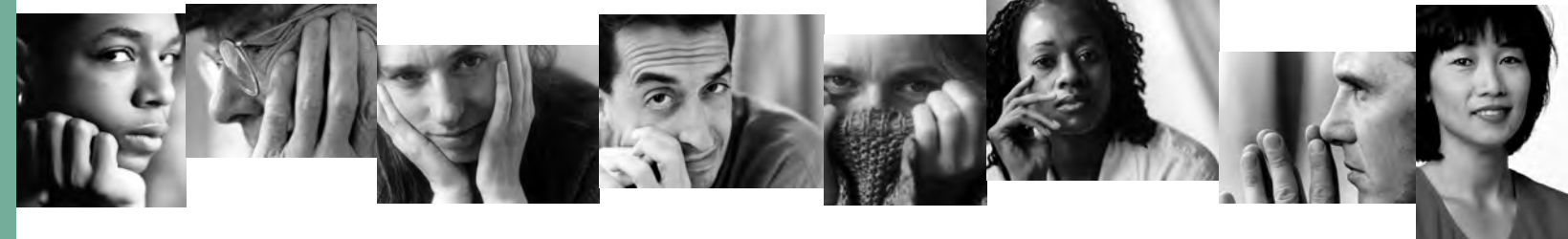
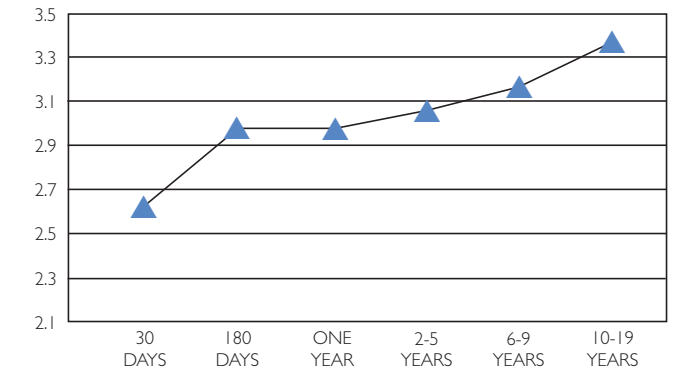
HELPING PEOPLE LIVE PRODUCTIVELY

GCB clients show improvement over time in treatment. These charts show overall average scores for all GCB clients who completed outcomes survey.

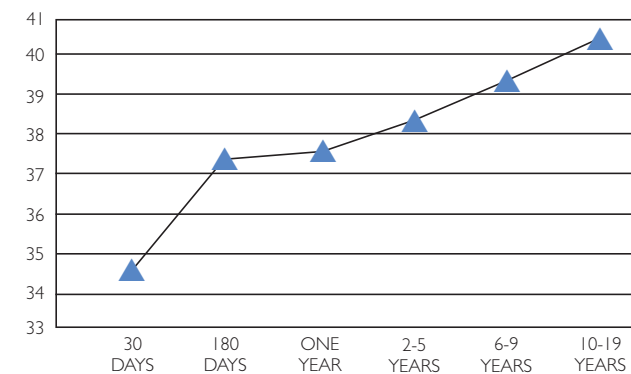
GCB AVERAGE SYMPTOM DISTRESS SCORE OVER TIME IN TREATMENT (A DECREASE SHOWS IMPROVEMENT)



GCB AVERAGE QUALITY OF LIFE SCORE OVER TIME IN TREATMENT



GCB AVERAGE CLIENT COMMUNITY FUNCTIONING SCORE OVER TIME IN TREATMENT



FY07 PERCENT OF GCB CLIENTS STAYING OUT OF JAIL, LIVING INDEPENDENTLY, STAYING OUT OF THE HOSPITAL

